

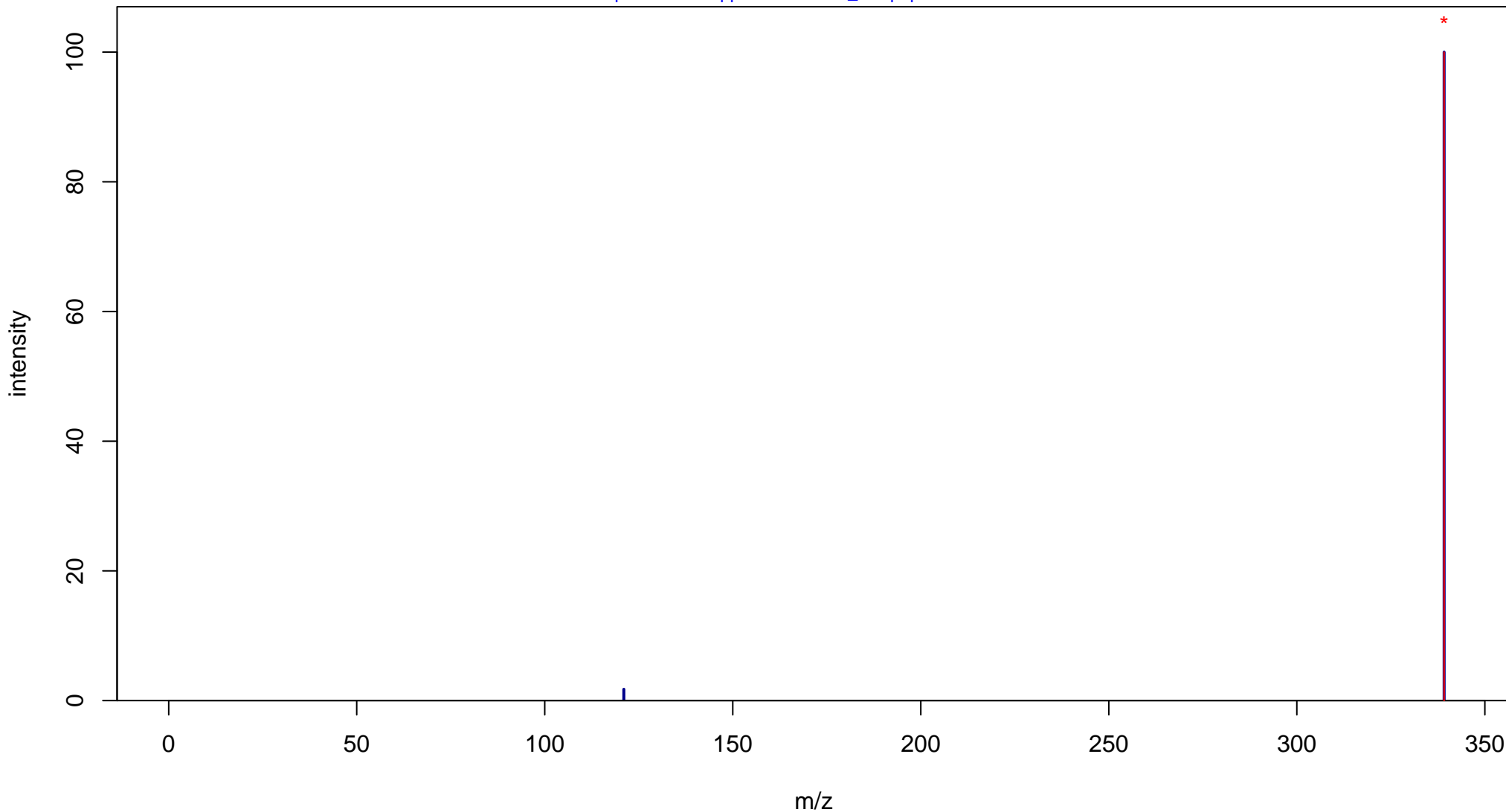
# Licochalcone A

Mass: 338.1518 Formula: C<sub>21</sub>H<sub>22</sub>O<sub>4</sub>

mode: + collisionE: 0V

METLIN ID: 52227 SIGMA Prod: 68783

[http://metlin.scripps.edu/metabo\\_info.php?molid=52227](http://metlin.scripps.edu/metabo_info.php?molid=52227)



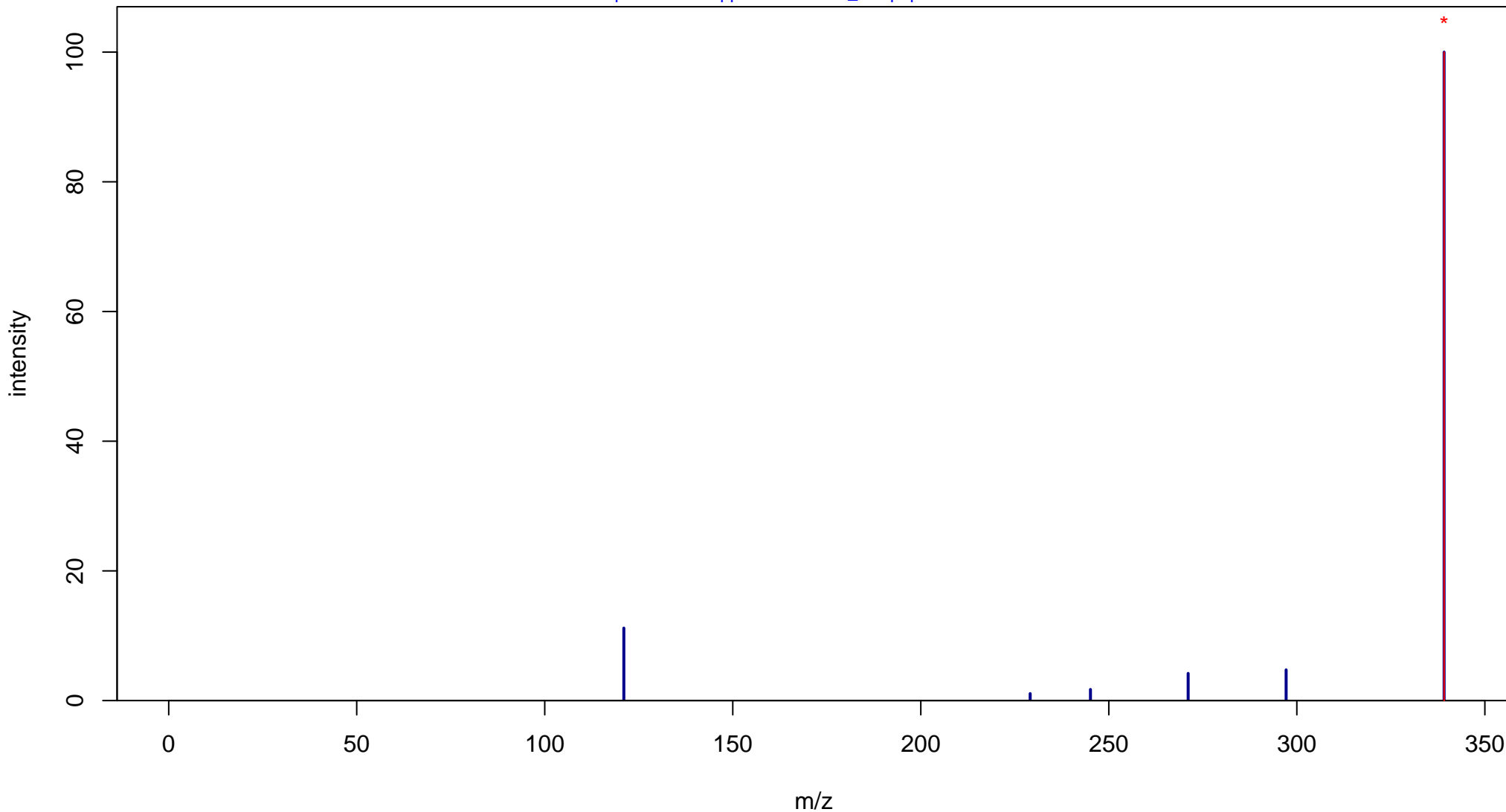
# Licochalcone A

Mass: 338.1518 Formula: C<sub>21</sub>H<sub>22</sub>O<sub>4</sub>

mode: + collisionE: 10V

METLIN ID: 52227 SIGMA Prod: 68783

[http://metlin.scripps.edu/metabo\\_info.php?molid=52227](http://metlin.scripps.edu/metabo_info.php?molid=52227)



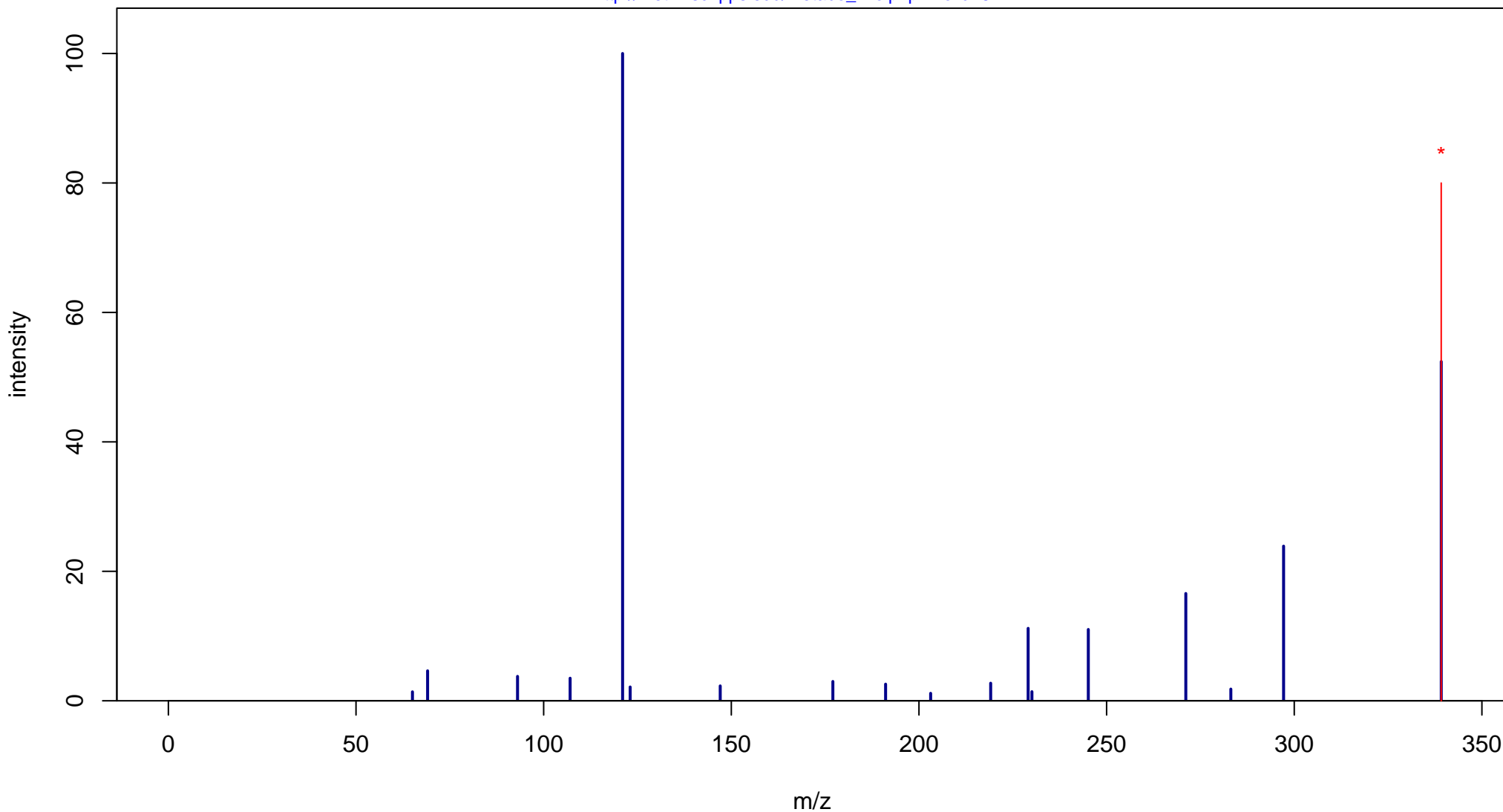
# Licochalcone A

Mass: 338.1518 Formula: C<sub>21</sub>H<sub>22</sub>O<sub>4</sub>

mode: + collisionE: 20V

METLIN ID: 52227 SIGMA Prod: 68783

[http://metlin.scripps.edu/metabo\\_info.php?molid=52227](http://metlin.scripps.edu/metabo_info.php?molid=52227)



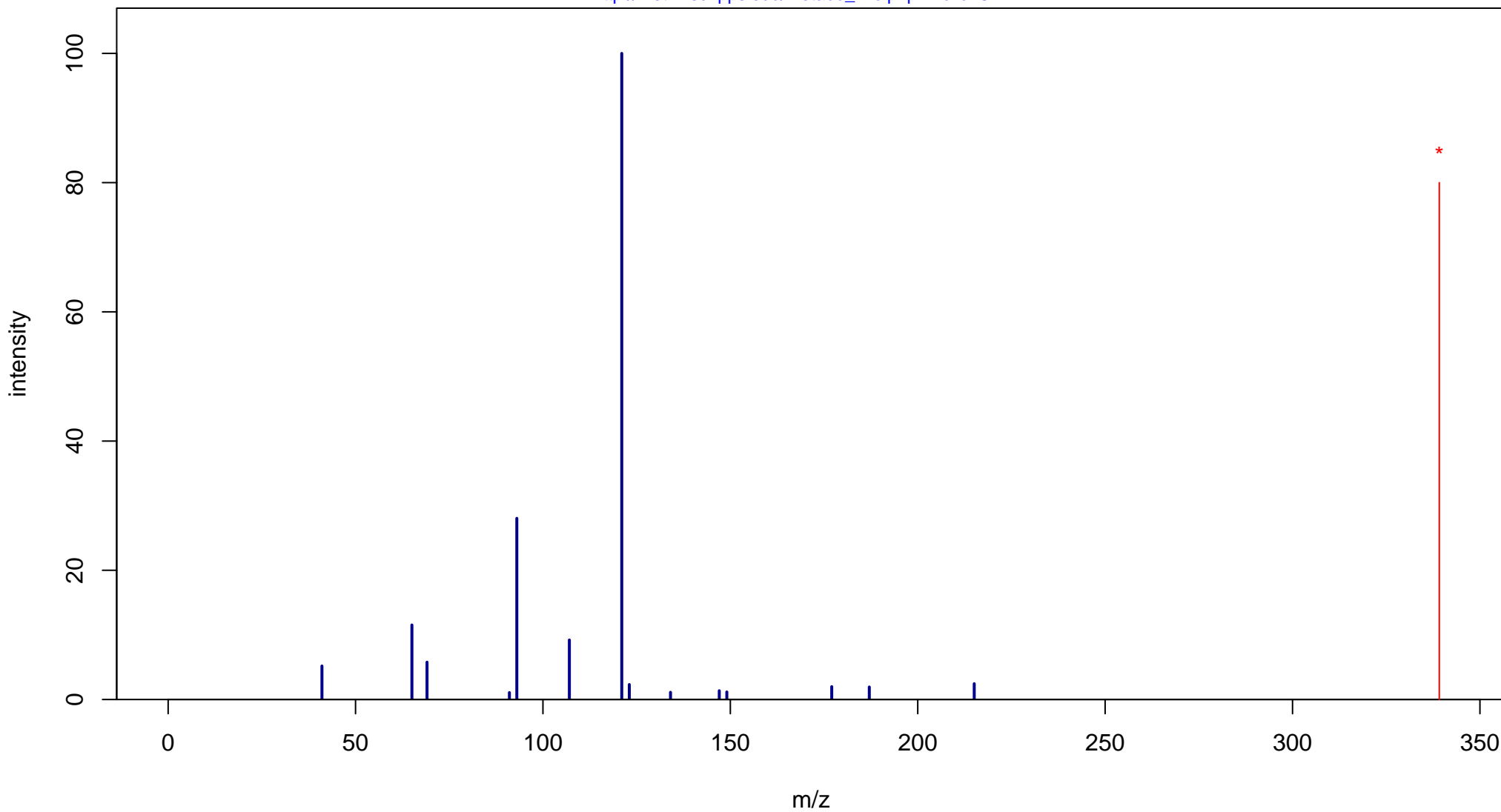
# Licochalcone A

Mass: 338.1518 Formula: C<sub>21</sub>H<sub>22</sub>O<sub>4</sub>

mode: + collisionE: 40V

METLIN ID: 52227 SIGMA Prod: 68783

[http://metlin.scripps.edu/metabo\\_info.php?molid=52227](http://metlin.scripps.edu/metabo_info.php?molid=52227)



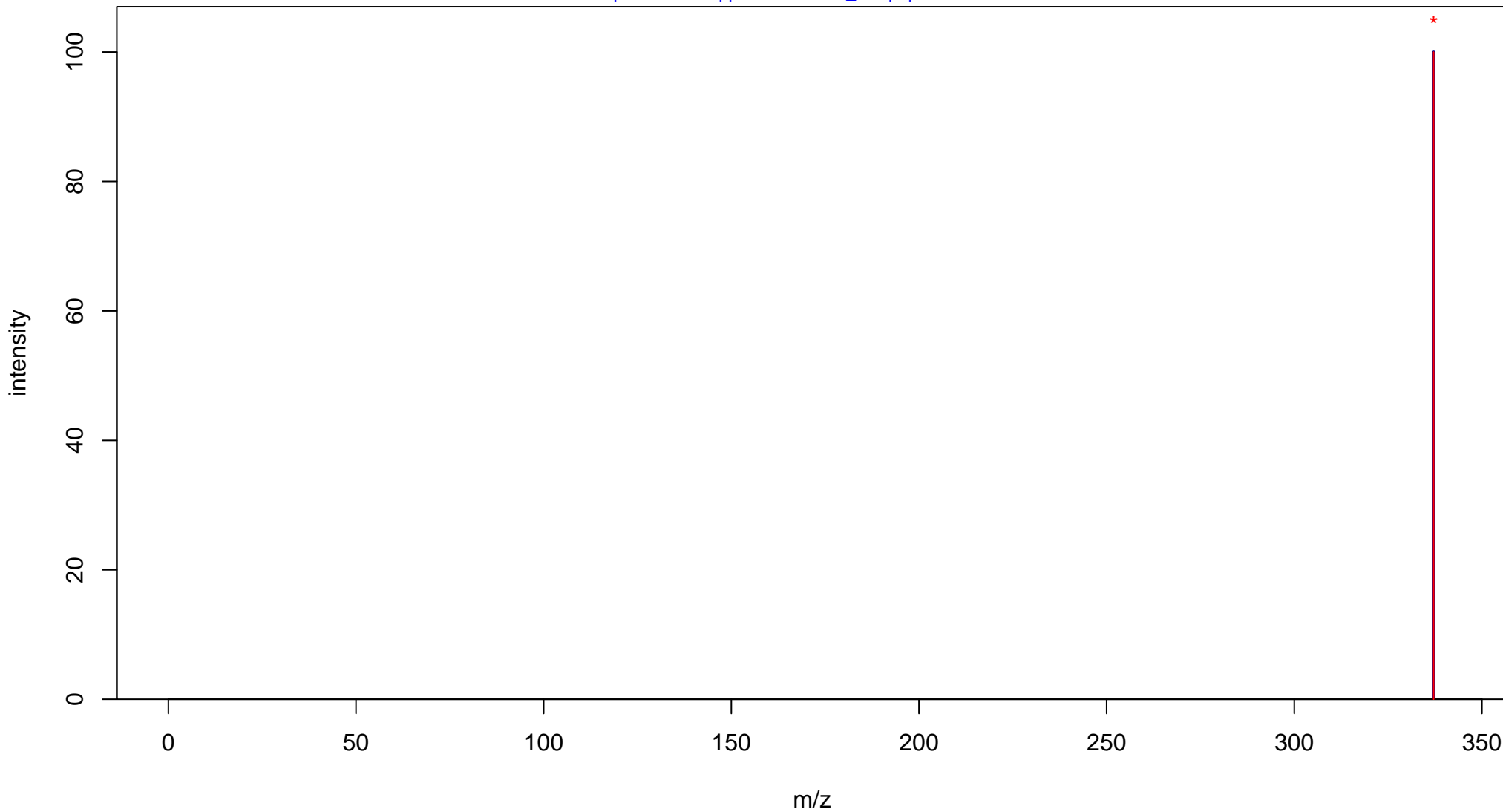
# Licochalcone A

Mass: 338.1518 Formula: C<sub>21</sub>H<sub>22</sub>O<sub>4</sub>

mode: - collisionE: 0V

METLIN ID: 52227 SIGMA Prod: 68783

[http://metlin.scripps.edu/metabo\\_info.php?molid=52227](http://metlin.scripps.edu/metabo_info.php?molid=52227)



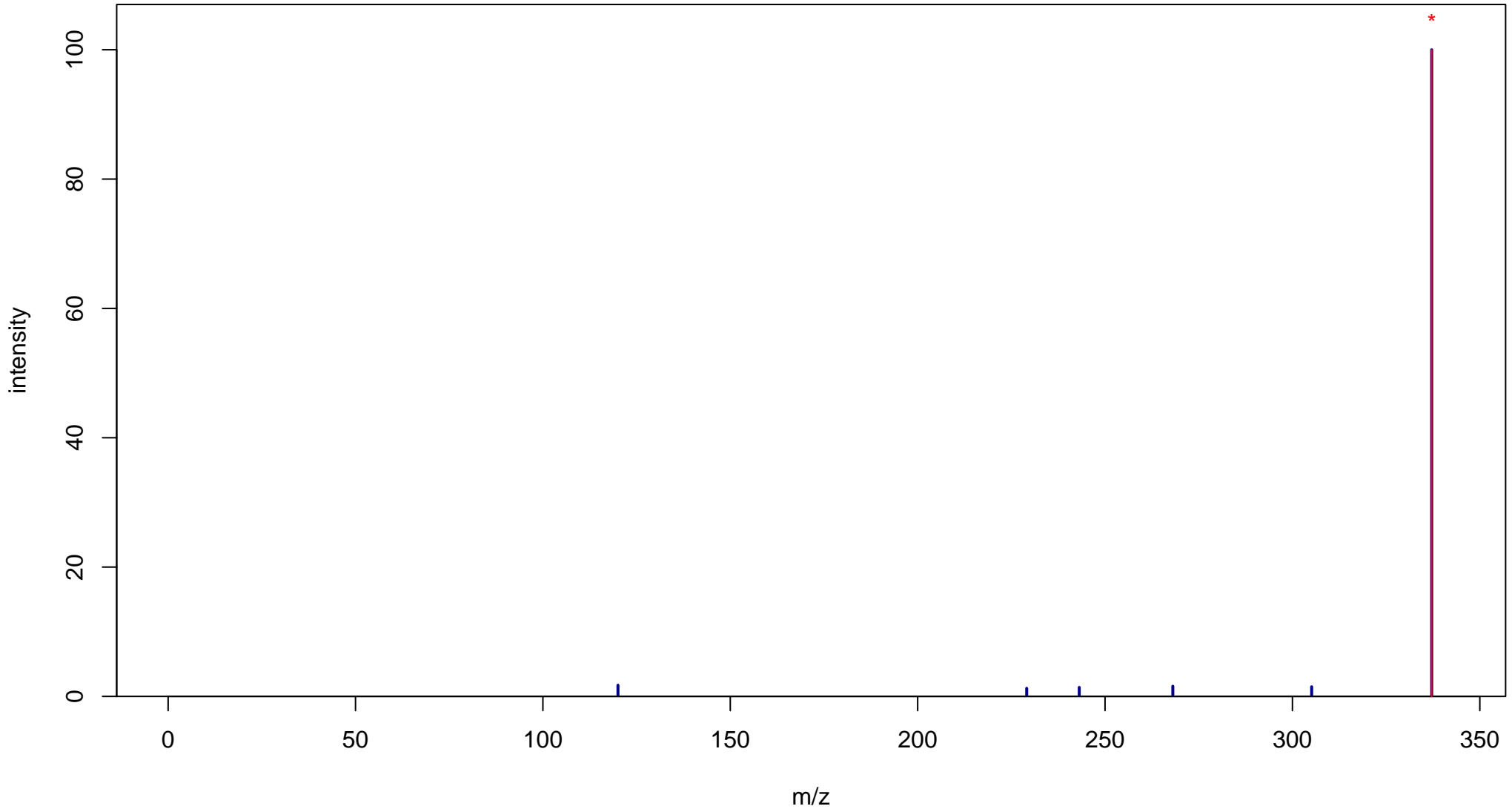
# Licochalcone A

Mass: 338.1518 Formula: C<sub>21</sub>H<sub>22</sub>O<sub>4</sub>

mode: - collisionE: 10V

METLIN ID: 52227 SIGMA Prod: 68783

[http://metlin.scripps.edu/metabo\\_info.php?molid=52227](http://metlin.scripps.edu/metabo_info.php?molid=52227)



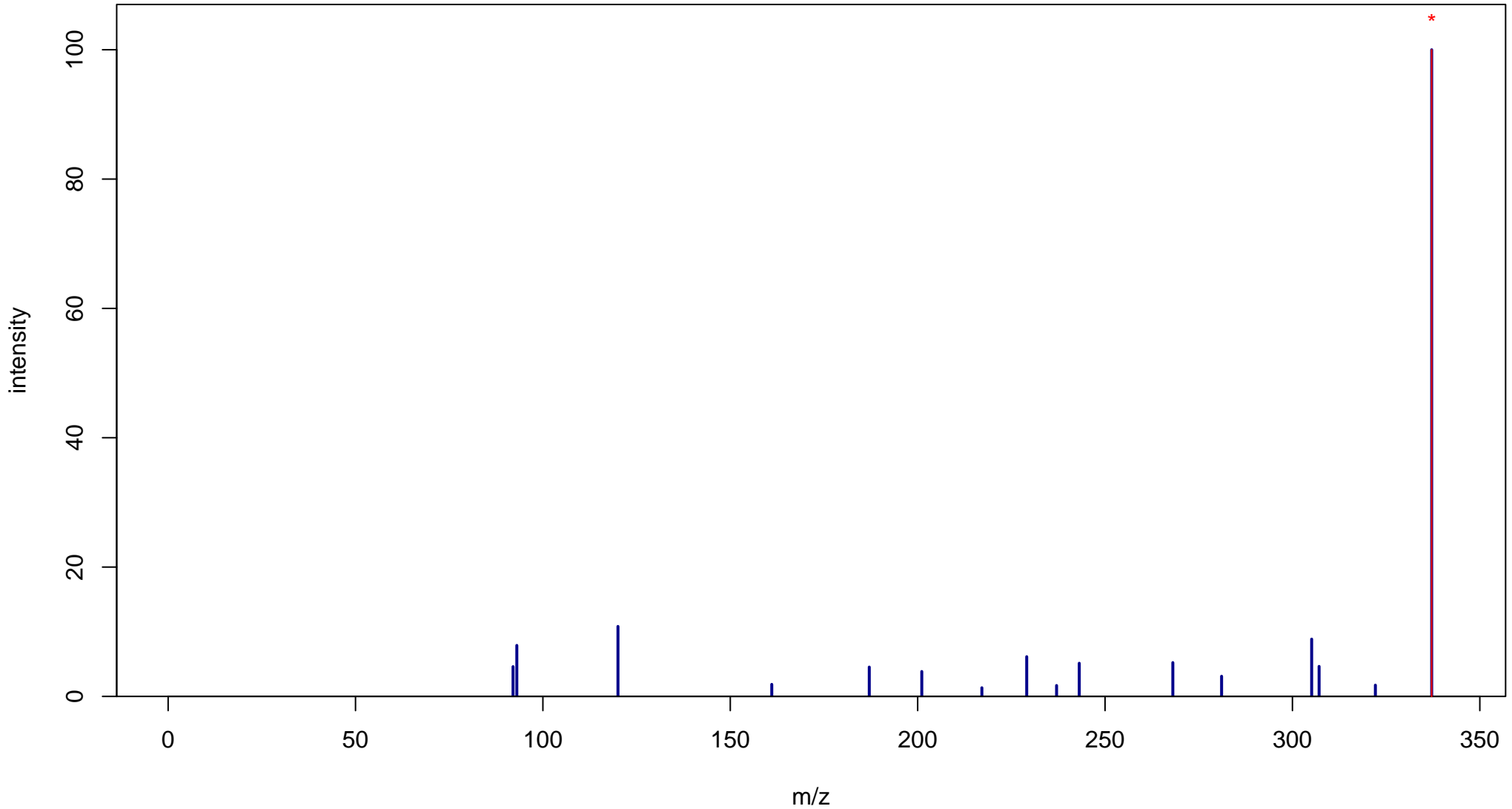
# Licochalcone A

Mass: 338.1518 Formula: C<sub>21</sub>H<sub>22</sub>O<sub>4</sub>

mode: - collisionE: 20V

METLIN ID: 52227 SIGMA Prod: 68783

[http://metlin.scripps.edu/metabo\\_info.php?molid=52227](http://metlin.scripps.edu/metabo_info.php?molid=52227)



# Licochalcone A

Mass: 338.1518 Formula: C<sub>21</sub>H<sub>22</sub>O<sub>4</sub>

mode: - collisionE: 40V

METLIN ID: 52227 SIGMA Prod: 68783

[http://metlin.scripps.edu/metabo\\_info.php?molid=52227](http://metlin.scripps.edu/metabo_info.php?molid=52227)

