

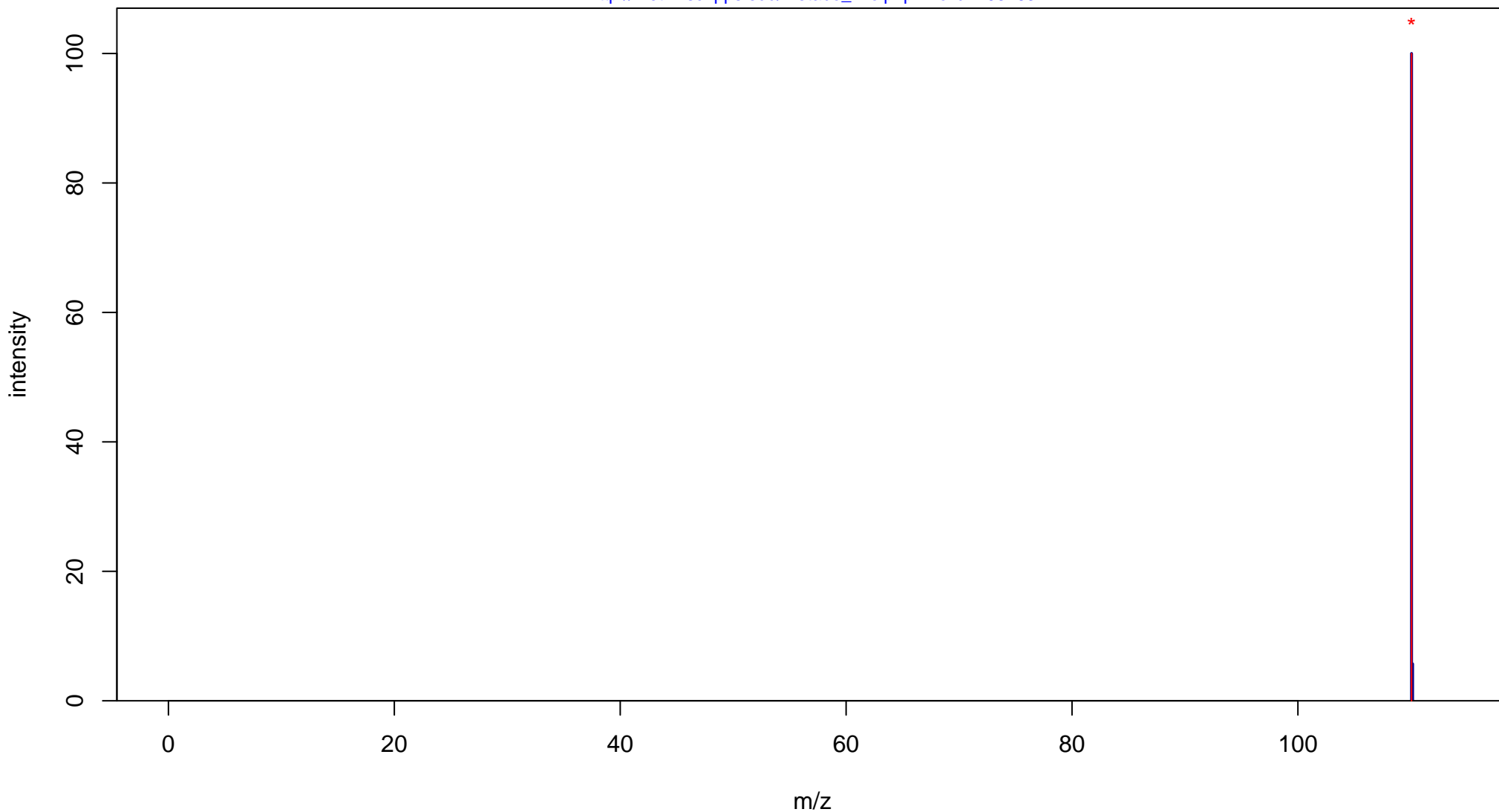
3-Hydroxy-2-Methylpyridine

Mass: 109.0528 Formula: C₆H₇NO

mode: + collisionE: 0V

METLIN ID: 103463 SIGMA Prod: 268534

http://metlin.scripps.edu/metabo_info.php?molid=103463



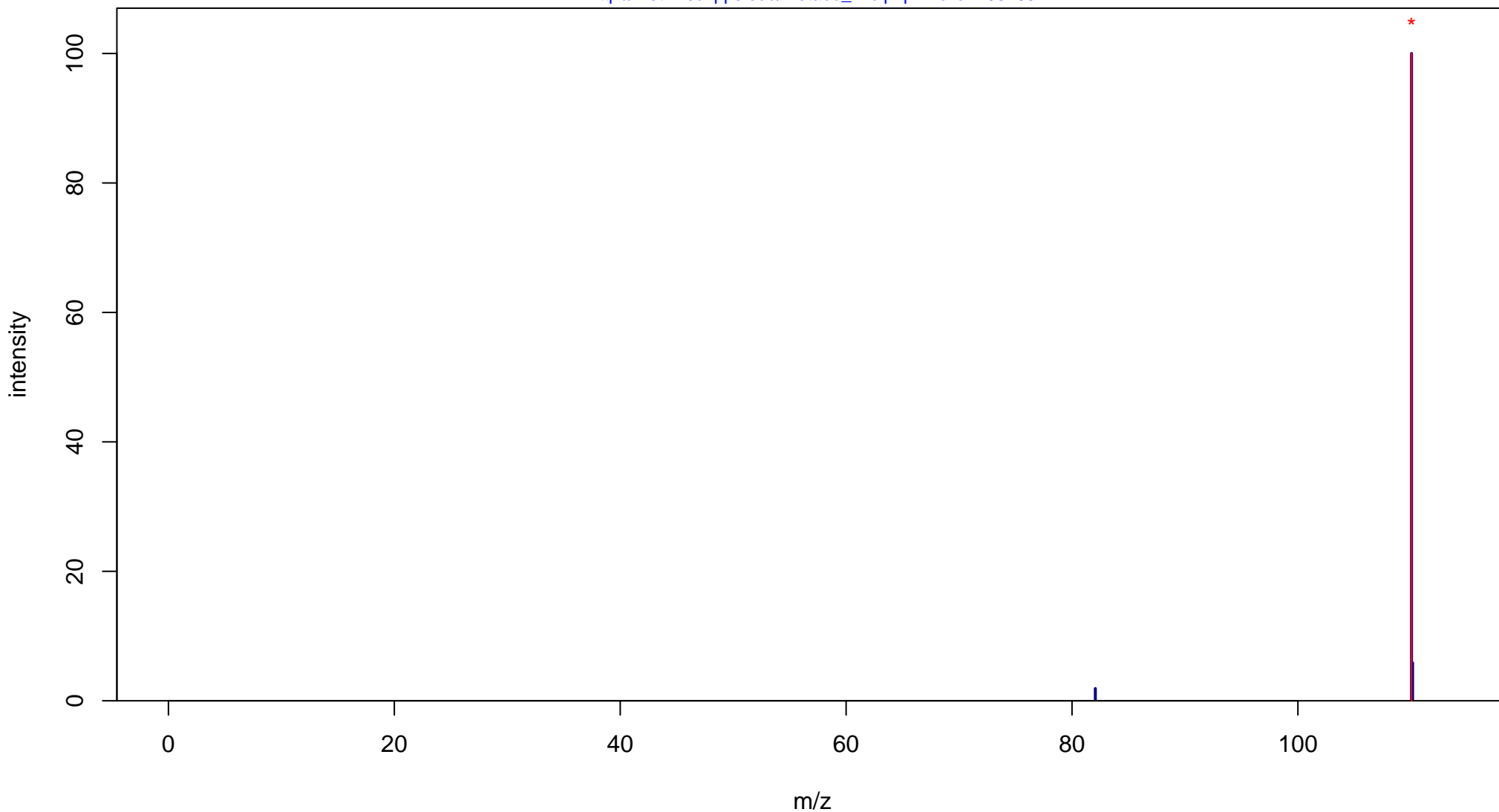
3-Hydroxy-2-Methylpyridine

Mass: 109.0528 Formula: C₆H₇NO

mode: + collisionE: 10V

METLIN ID: 103463 SIGMA Prod: 268534

http://metlin.scripps.edu/metabo_info.php?molid=103463



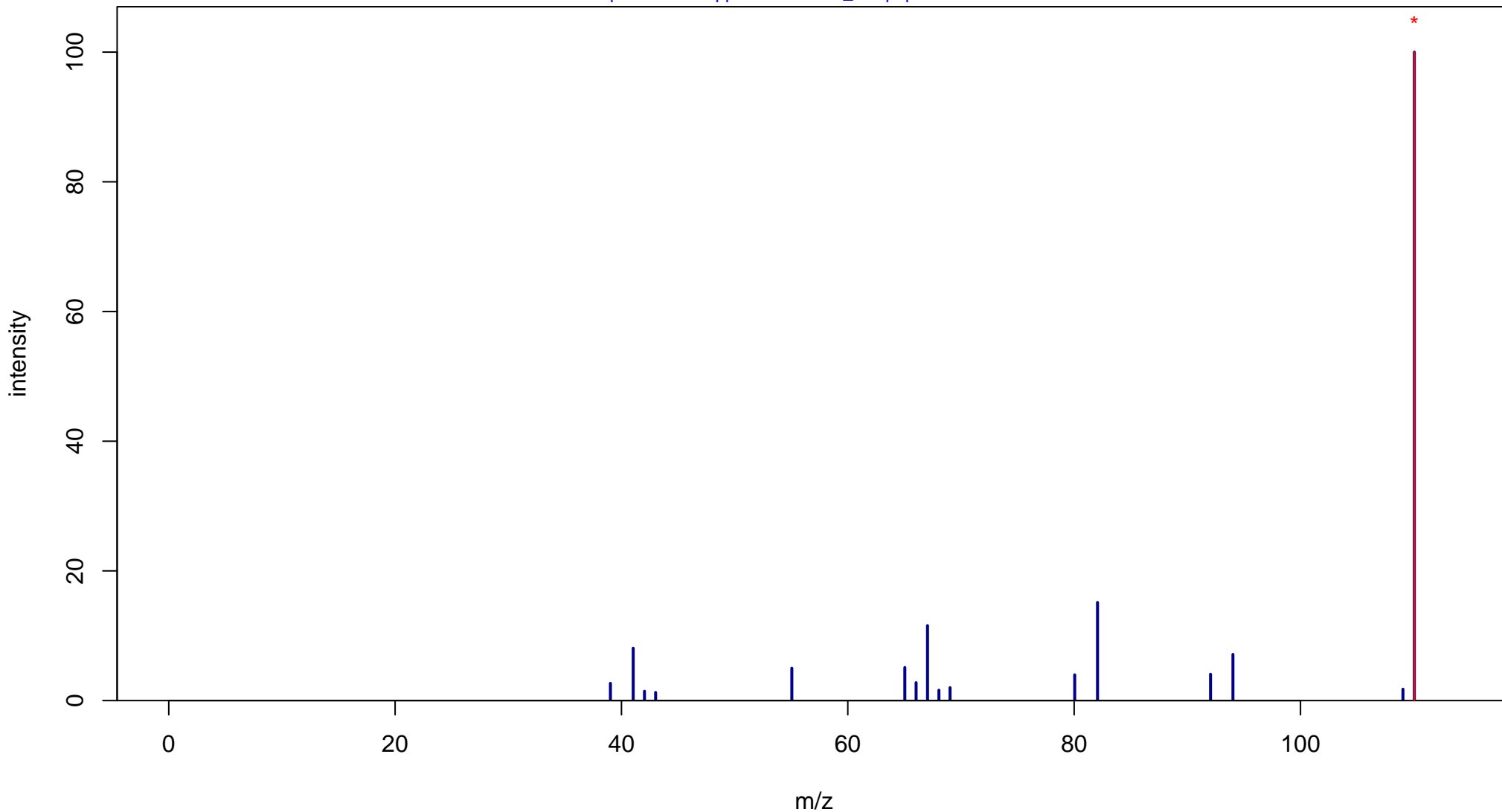
3-Hydroxy-2-Methylpyridine

Mass: 109.0528 Formula: C₆H₇NO

mode: + collisionE: 20V

METLIN ID: 103463 SIGMA Prod: 268534

http://metlin.scripps.edu/metabo_info.php?molid=103463



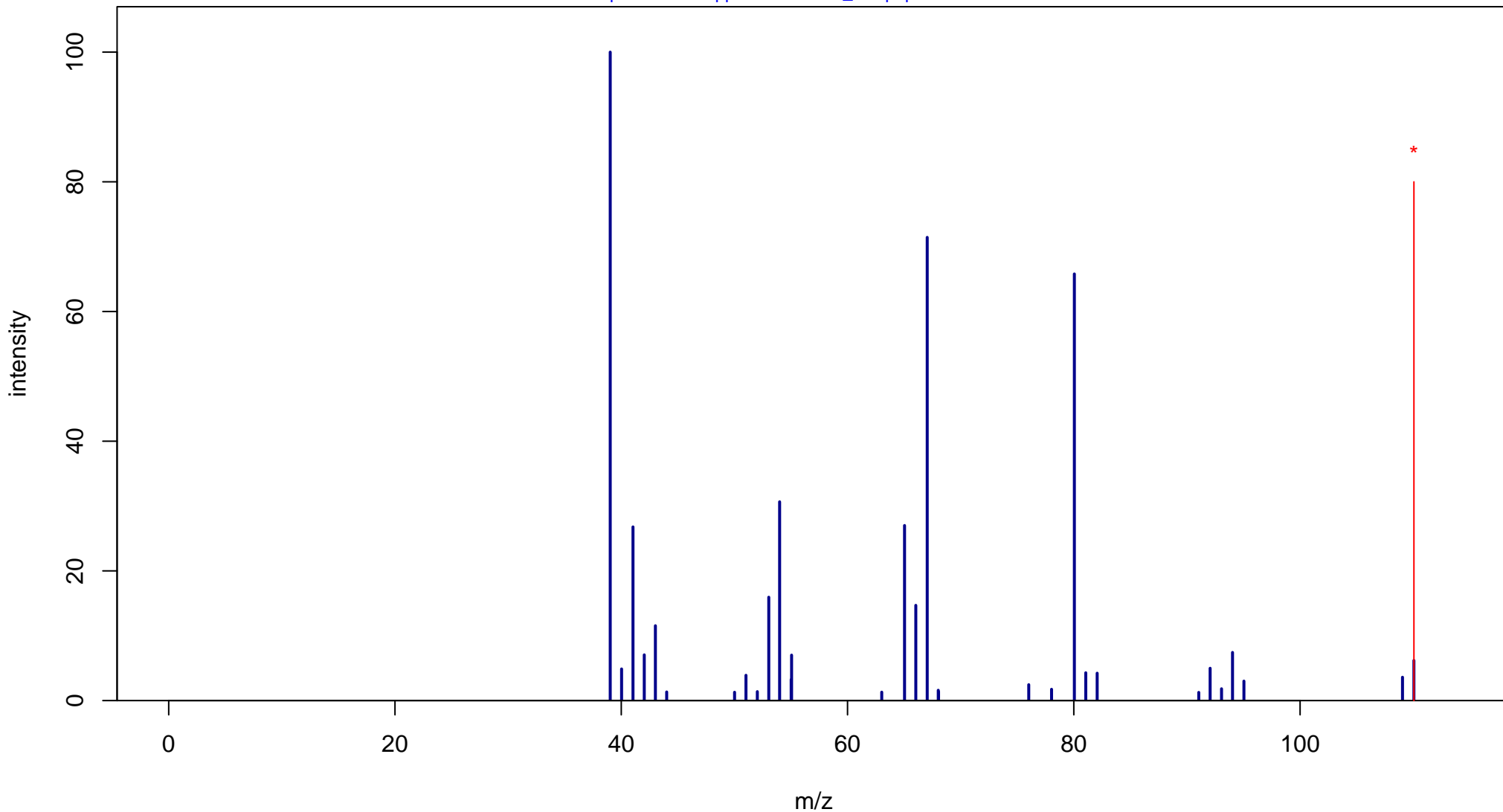
3-Hydroxy-2-Methylpyridine

Mass: 109.0528 Formula: C₆H₇NO

mode: + collisionE: 40V

METLIN ID: 103463 SIGMA Prod: 268534

http://metlin.scripps.edu/metabo_info.php?molid=103463



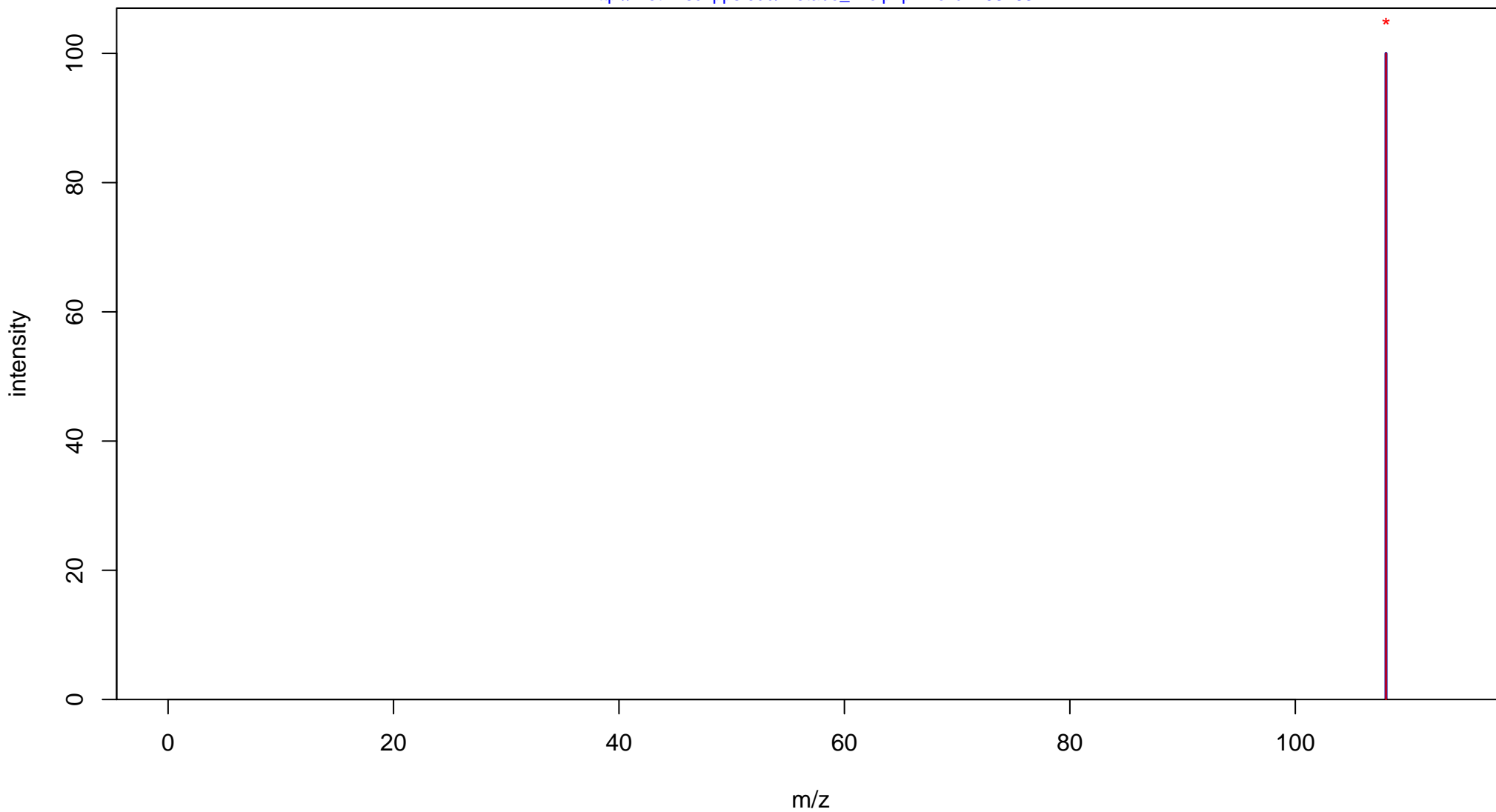
3-Hydroxy-2-Methylpyridine

Mass: 109.0528 Formula: C₆H₇NO

mode: - collisionE: 0V

METLIN ID: 103463 SIGMA Prod: 268534

http://metlin.scripps.edu/metabo_info.php?molid=103463



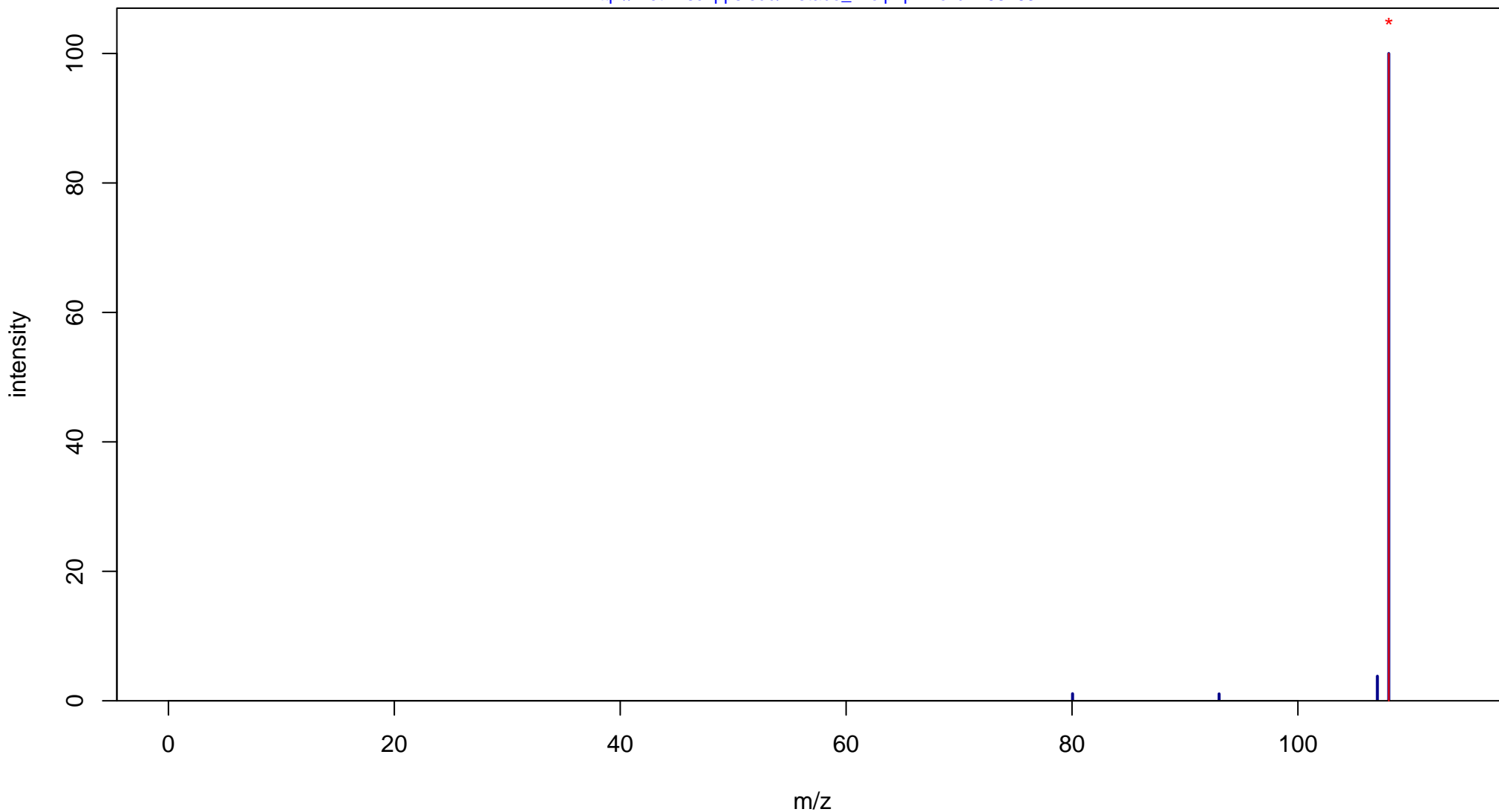
3-Hydroxy-2-Methylpyridine

Mass: 109.0528 Formula: C₆H₇NO

mode: - collisionE: 10V

METLIN ID: 103463 SIGMA Prod: 268534

http://metlin.scripps.edu/metabo_info.php?molid=103463



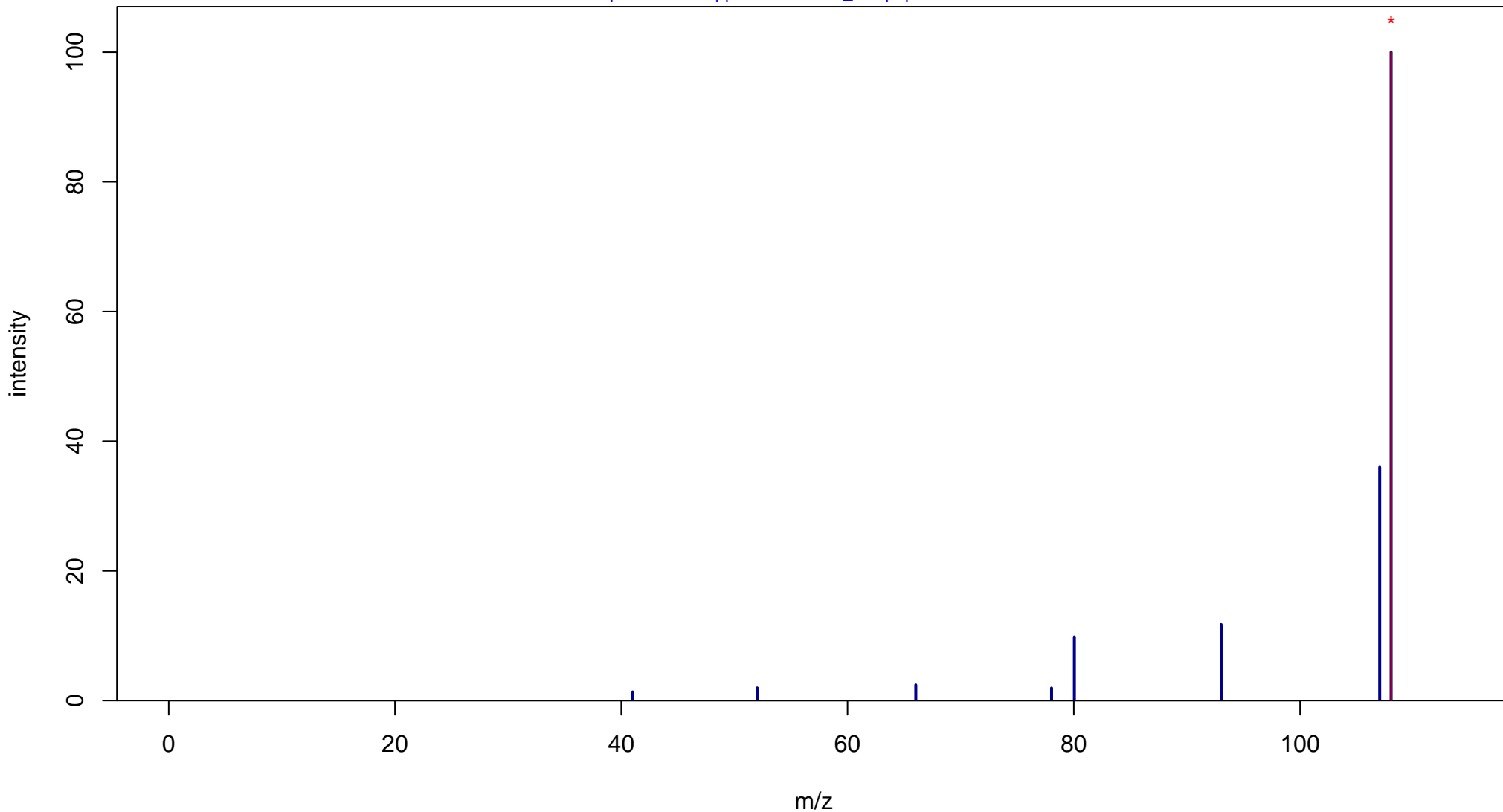
3-Hydroxy-2-Methylpyridine

Mass: 109.0528 Formula: C₆H₇NO

mode: - collisionE: 20V

METLIN ID: 103463 SIGMA Prod: 268534

http://metlin.scripps.edu/metabo_info.php?molid=103463



3-Hydroxy-2-Methylpyridine

Mass: 109.0528 Formula: C₆H₇NO

mode: - collisionE: 40V

METLIN ID: 103463 SIGMA Prod: 268534

http://metlin.scripps.edu/metabo_info.php?molid=103463

