






# End of year savings: Explore the Antibody Advantage!

Unleash the power of antibodies and enjoy  
**25% off on our entire antibody portfolio!**

Our **primary antibodies** are innovative, validated, and guaranteed to perform reliably across multiple applications:

-   • **ZooMAb® recombinant monoclonal antibodies:** reproducible, sustainable, and animal-free.
-  • Partnered with Atlas Antibodies, our **Prestige Antibodies®** are designed to detect and target over 80% of the human proteome, ensuring they are the most specific products on the market.

**Secondary antibodies** from various host species, including polyclonal and monoclonal options, as well as conjugated antibodies, probes, and Protein A, G, and L.

## Limited time offer

Use promo code **IHO\*** when you place your order.  
Offer valid until 31 December 2025

To explore our **comprehensive antibodies'** offer, please visit  
**[SigmaAldrich.com/antibodies](https://SigmaAldrich.com/antibodies)**

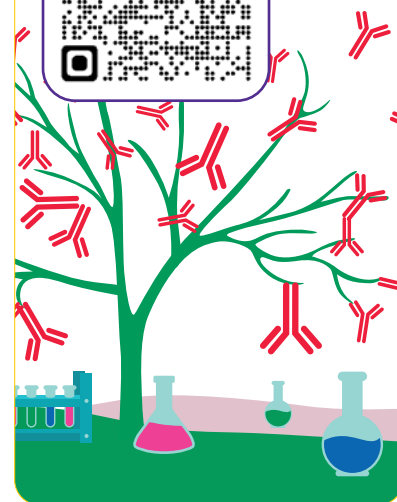
**Don't miss out on this amazing opportunity to stock up on high-quality antibodies at a discounted price!**

*\*Valid in WE - Cell Marque™ Antibodies excluded*

**WANT TO STAY UP-TO-DATE with all upcoming challenges?**

Subscribe to our email reminder and don't miss one of the upcoming attractive promotion and prizes.

**[SigmaAldrich.com/SeasonalSpecials](https://SigmaAldrich.com/SeasonalSpecials)**



We have built a unique collection of life science brands with unrivalled experience in supporting your scientific advancements.

**Millipore® Sigma-Aldrich® Supelco® Milli-Q® SAFC® BioReliance®**

The Life Science business of Merck operates as MilliporeSigma in the U.S. and Canada.

© 2024 Merck KGaA, Darmstadt, Germany and/or its affiliates. All Rights Reserved. Merck and the vibrant M are trademarks of Merck KGaA, Darmstadt, Germany or its affiliates. All other trademarks are the property of their respective owners. Detailed information on trademarks is available via publicly accessible resources.

MK\_FL13886EN Ver. 1.0 57482 07/2024

